

LUTRONIC

## CLARITY™

Dual Wavelength

Alexandrite & Nd:YAG Laser

**SUPERIOR CHOICE FOR  
HAIR REMOVAL, PIGMENT,  
VASCULAR AND MORE...**



# The dual wavelength solution effectively delivers a variety of parameters and

CLARITY is one of the most versatile dual wavelength platform on the market for top laser indications aesthetic physicians around the world treat every day. Combining two workhorse wavelengths – long pulsed 755 nm Alexandrite and 1064 nm Nd:YAG in one easy-to-use device, physicians may gently remove pigmented lesions, unwanted hair and ameliorate the appearance of vascular lesions.

## BUILT FOR YOU

Built with the physician in mind, Clarity is a cohesive device which is extremely user-friendly. A feature rich device that focuses on ensuring the greatest treatment versatility, while maintaining efficacious outcomes, it offers a wide range of settings and tips, without sacrificing quality. Clarity operates at your speed; combining large spot sizes, high power and lighting fast repetition rates for improved outcomes and treatment times that both you and your patients will appreciate.

## PROVIDE THE RESULTS YOUR PATIENTS DEMAND

### VASCULAR LESION



### FULL RANGE OF APPLICATIONS

- Hair removal
- Pigmented lesions
- Wrinkle Reduction
- Rosacea
- Hemangiomas
- Leg veins
- Warts
- And more...

### HAIR REMOVAL



### PIGMENT



Before & after photos courtesy of J.H.Kim, MD, J.H.Won, MD, & B.L. Goo, MD - South Korea

# d incredibly fast treatment speeds

## FEATURES

- Maximized treatment versatility with the dual wavelengths; 755 nm Alexandrite and 1064 nm Nd:YAG
- Fast treatments from combined high fluence, large spot sizes and fast Hz rates
- Wide range advanced parameters
- Choice of enhanced comfort from either built in Cryo ICD or cooled air
- Consistent results from the flat-top beam profile
- Treat the full compliment of skin types
- Versatility to target melanin, vessels, all hair thicknesses and remodel collagen

*The CLARITY is one of the favorites in my practice. Hair is safely and permanently removed from the face, chest, back, legs and other areas within 3-4 treatment sessions. With the choice of the two wavelengths, I can balance the parameters to treat different hair colors and thicknesses in a variety of skin types. Patient satisfaction is high, as is that of my staff and myself."*

Bettina Rümmelein, MD  
Medical Director, Medical Centre  
See-Spital, Kilchberg/Zurich

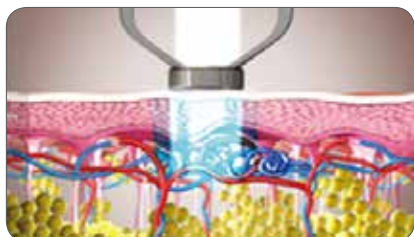


## CONVENIENCE OF SINGLE FIBER WITH QUICK CHANGE TIPS



Clarity has been engineered to ensure that procedures are fast and easy, these time saving features include a single fiber delivery which eliminates the hassle associated with having to swap out the fiber mid procedure and the available 9 quick-change spot size choices ranging from 2 to 20 mm utilizing either wavelengths.

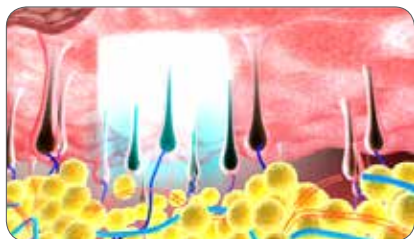
## SELECTIVELY TARGET AND TREAT MULTIPLE SKIN CONDITIONS



Coagulate and shrink dermal blood vessels



Selectively target melanin



Selectively destroy the hair follicles



Stimulate neocollagenesis

**LUTRONIC**

## WHY CLARITY?

Built on a solid foundation of long standing technology, CLARITY offers reliability you can depend on. It will soon become your workhorse system that you, your staff and patients will love.

- Quickly treat multiple applications for improved ROI
- Easy to use with advanced ergonomic design and user-friendly features
- Comfortable procedures ensured through your choice of cooling options
- Peace of mind knowing your device comes with superior service and warranty support for the longevity of your device
- Confidence knowing you and your staff will be well educated by our professional trainers

## SYSTEM SPECIFICATIONS

Wavelength	755 nm / 1064 nm
Laser Type	Long Pulsed Alexandrite / Nd:YAG
Beam Delivery	Lens-coupled optical fiber with Handpiece
Aiming Beam	<5 mW @515 nm
Pulse Energy (Max. Fluence)	Max 100 J for Nd:YAG (Max. Fluence 600 J/cm <sup>2</sup> ) Max. 60 J for Alex (Max. Fluence 520 J/cm <sup>2</sup> )
Pulse Width (ms)	0.35 ms - 300 ms
Pulse Rate (Hz)	0.5 - 10 Hz
Display System	8" Touch LCD GUI
Spot Size (9 types)	2, 3, 5, 8, 10, 12, 15, 18, 20 mm
Pulse Control	Finger switch & Footswitch
Cooling Type	Cryo ICD or Air Cooling
Dimensions (mm)	1148.8 (H), 776.8 (D), 434 (W)
Weight	110 kg / 242.5 lbs
Electrical rating	4.0 kVA (AC 220 ~ 230 V, 50/60 Hz), 30 Amp
Calibration	External



lutronic.com | 888-588-7644

©2015, LUTRONIC Group of Companies. All rights reserved. LUTRONIC, its logo and CLARITY are trademarks or registered trademarks of the LUTRONIC Group of Companies. Specifications are subject to change without notice. This product or the use of this product is covered by one or more U.S. and foreign patents or patent application pending.  
FDA Cleared; CE 0434; PN Clarity\_BR\_US\_v02\_08072015

LUTRONIC