

INFINI

A Look at RF Technology
and New Advances



Why Infini?

The Ideal Skin Tightening Treatment

- Consistent efficacy
- Little or no downtime
- Doesn't require a lot of physician's time
- Low cost of consumables
- High satisfaction rate
- Little risk of complications
- Quick learning curve
- Discomfort is minimal or easily controlled

Devices used for Skin Tightening

- Lasers – Ablative and Non Ablative, Fractional
- High Frequency Ultrasound (HIFU)
- Radiofrequency (RF) – Monopolar, Bipolar, etc.
- Infrared (IR)
- Subdermal Lasers and RF
- Microneedle Fractional Radiofrequency (MFR)

Laser “Drawbacks”

- Requires a physician to use in most states (IV)
- Most have at least 3-5 days of downtime
- Ablative lasers require hand holding/office time
- Risks of pigmentation (hypo/hyper), infection, scarring
- Summer months see dramatic drop in cases
- With Fractional Technology, things are better
- Fraxel Dual consumable is ~ \$150/face
- Treatment time is about 30 minutes

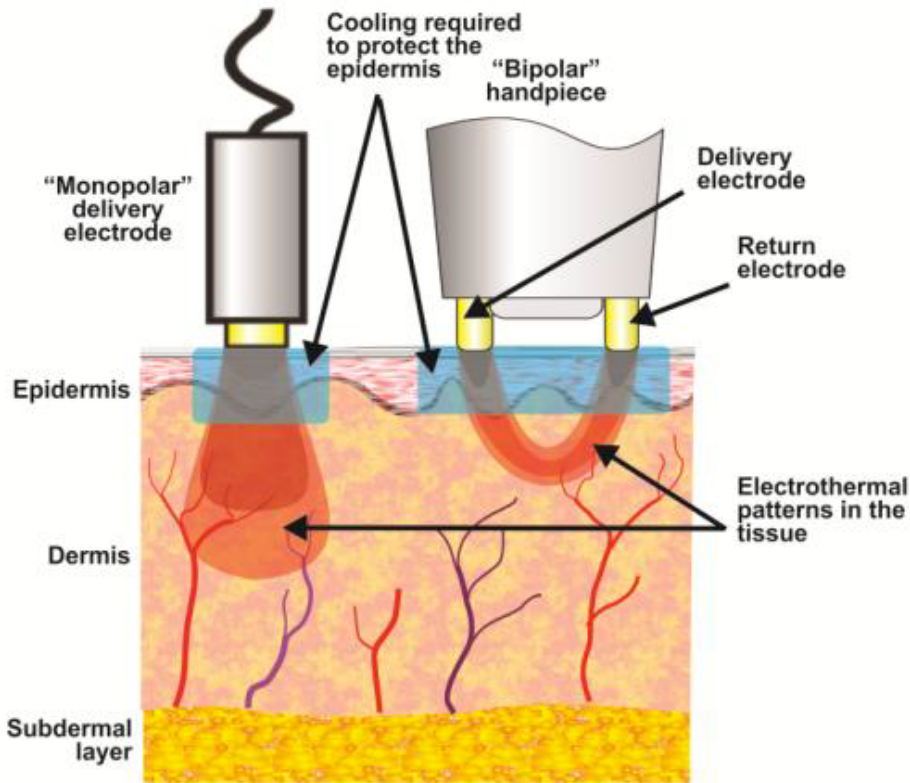
High Frequency Ultrasound (HIFU)

- Can be relegated to a nurse or tech
- Minimal or no downtime
- Very little risk – bruising, numbness (temp.)
- High consumable costs – about \$1/line, 800+
- About 80% show improvements
- About 15,000 TCP per treatment (MFR-50K)

Traditional Radiofrequency

- Dozens of devices – monopolar, bipolar, tripolar, mixed
- Class 2 device – nurse or tech
- Need to cool skin to protect
- Surface RF devices push RF energy into tissue to get to critical temperature ~42 degrees to stimulate collagen
- Heating is global and not fractional
- Must protect the skin
- Too much heat – fat necrosis, too little - no results
- Leads to results that are not reproducible and requires multiple treatments

Monopolar vs Bipolar



- The 2 major categories of devices
- Monopolar pushes energy deeper with less predictable heating patterns
- Bipolar will be more predictable but still not exact and not fractional
- Transmission of energy is dependant on skin quality, hydration, thickness, amount of collagen

Infini Microneedle Fractional RF (MFR)

- Energy deposited at an exact level 0.5-3.5mm
- Temperature high enough for coagulation – maximum tightening effects - DEFINITELY
- Physical effect on fibroblasts – stretching by the microneedles leads to further collagen
- 2 Tip options (7x7 & 4x4)
- No skin cooling, very little pigmentation risk
- Can treat all Skin Types I - VI
- FRACTIONAL HEATING OF DERMIS – UP TO 5 LEVELS

Infini Microneedle Fractional RF (MFR)

- Results can be seen with one treatment, better with more
- Pinpoint bleeding
- 36 hours of redness and swelling
- Some bruise around eye
- Stamping seen in some – Vbeam, time
- No fat loss because heat is controlled
- No wound care – topical growth factors/HQ/
Retin A

Infini Microneedle Fractional RF (MFR)

- About 60% just use topical anesthesia
- 10% add Ativan +/- Lortab
- 30% are blocked with cannulas, Lido w epi (especially lip lines)
- Treating neck in most cases with face, chest too
- None require post procedure pain meds
- A few acne flairs treated with minocin

Conditions Treated with MFR

- Thin, wrinkled, sun damaged skin
- Lip lines
- Laxity along the jawline*
- Crepiness around the eyes
- Eyebrow ptosis and upper lid hooding
- Necklace lines*
- Lines in declote*

*not FDA cleared indication

Comparing INFINI MFR to other RF

- Depth is absolutely known
- Critical temperature is always achieved – at a safe level
- Coagulation is always achieved to enable contraction along with collagen stimulation
- Skin is protected – no cooling needed and minimal risk (when insulated needles used)
- NOT AFRAID TO GO OVER B AND A PICS
- Results are consistent – high satisfaction
- Multiple treatments are better but not always needed
- Easy learning curve with low fatigue to user
- Low consumable cost \$70 (Thermage is over \$400)

Comparison of Skin Rejuvenation Techniques

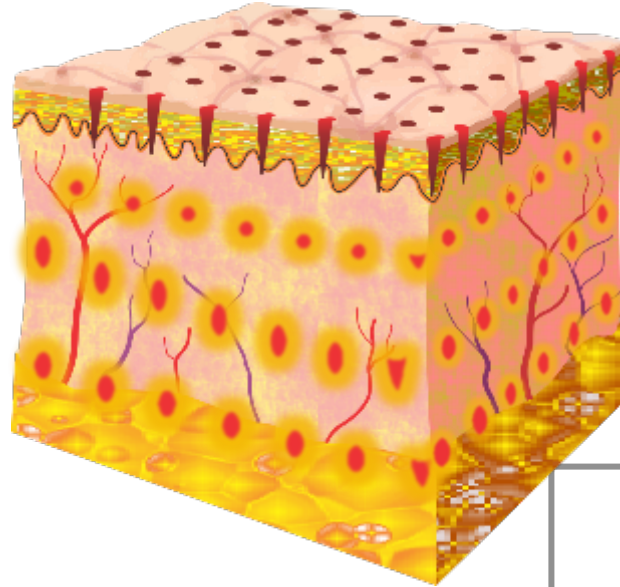
Feature	Non-Invasive RF	High Intensity Focused Ultrasound	Ablative Laser	Non-ablative Laser	MFR Microneedle Fractional RF
Low PIH Risk	✓	✓			✓
Low Overall Risk	✓	✓		✓	✓
Fractional		✓	✓	✓	✓
Min. Downtime	✓	✓		✓	✓
Low Wound Care	✓	✓		✓	✓
High Depth		✓			✓
High Patient Satisfaction		✓	✓	✓	✓
Non-physician Tx	✓	✓		✓	✓
Low Cost Consumables	✓		✓	✓	✓
Summer/Tan Skin		✓			✓
Dark Skin		✓			✓

ADVANCES IN RF

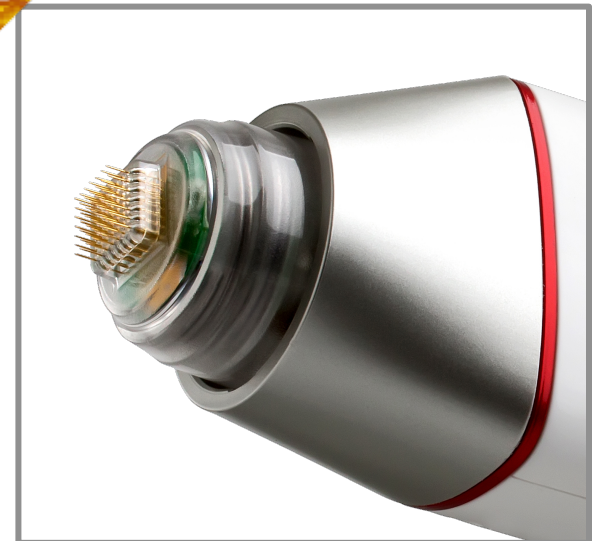
Introducing the Next Generation
Microfractional RF(MFR) - INFINI

INFINI - MULTIPLE NEEDLES, MULTIPLE PASSES

3rd Pass
2nd Pass
1st Pass



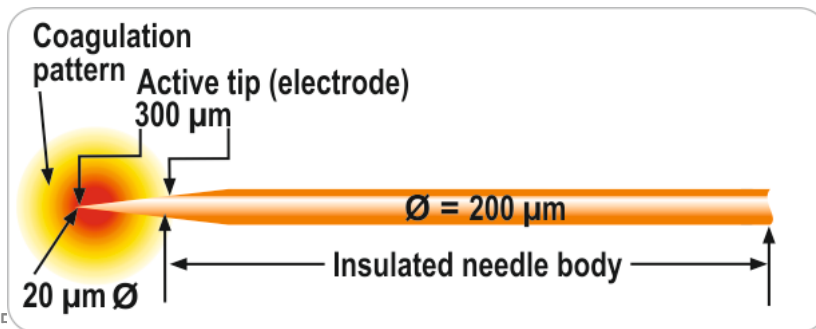
16 pin tip



49 pin tip

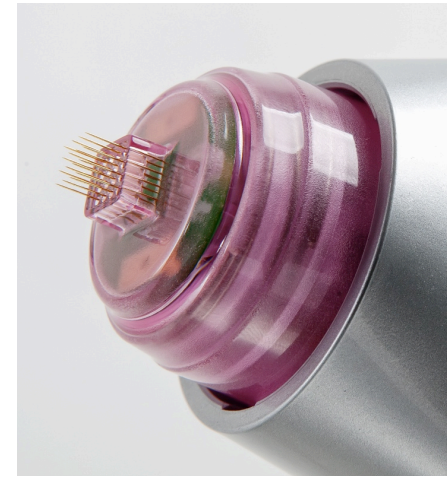
INFINI MFR – 49 Pin Tip

- Array insertion in 100ms is automated to a controlled preset depth
- Depth adjustable from 0.5 to 3.5 mm
- Unique 7x7 array of insulated microneedles
 - 200 micron diameter ~34g needle
 - Insulated needle body
- Low cost disposable sterile needle array



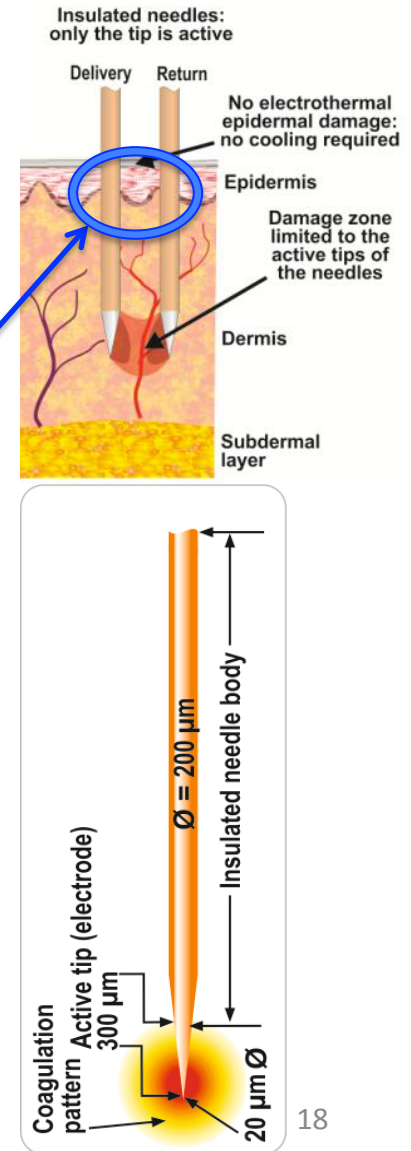
INFINI - 16 Pin Tip

- 60 % smaller than 49 pin tip
- Ideal for around the eyes, and for off face scars
- Energy delivered is the same as the larger pin – which means 3 times more energy per area
- Energy settings have to be reduced by a factor of three, other settings can stay the same
- Same price as large tip - \$700 per box of ten



INFINI MFR – Insulated Microneedles

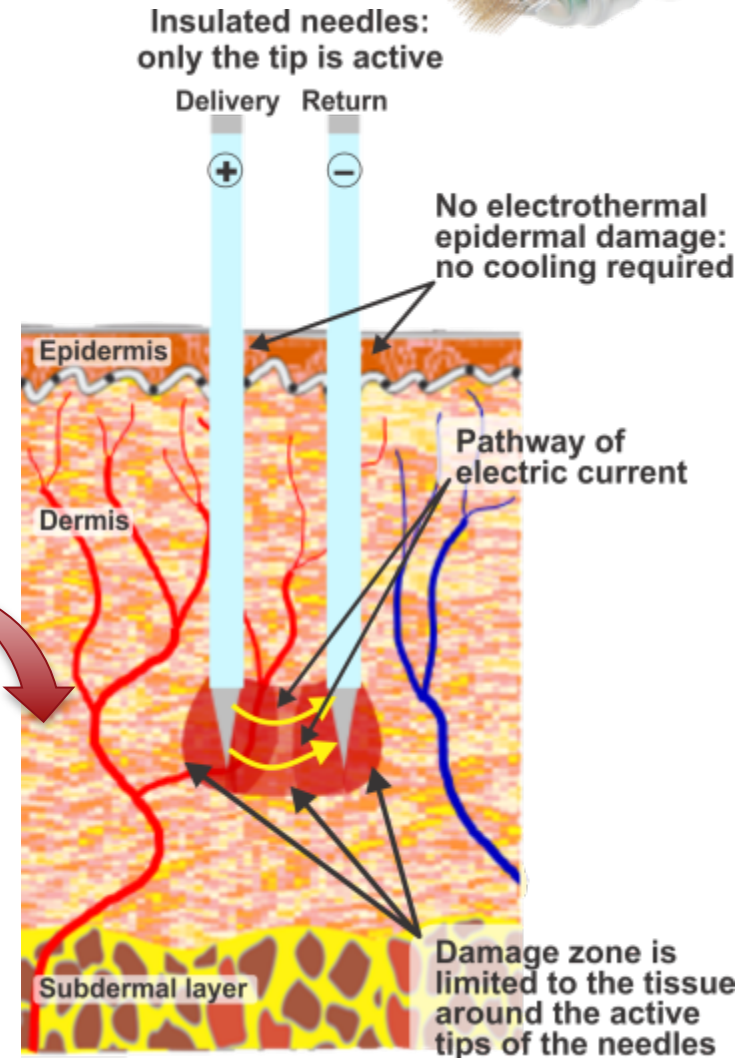
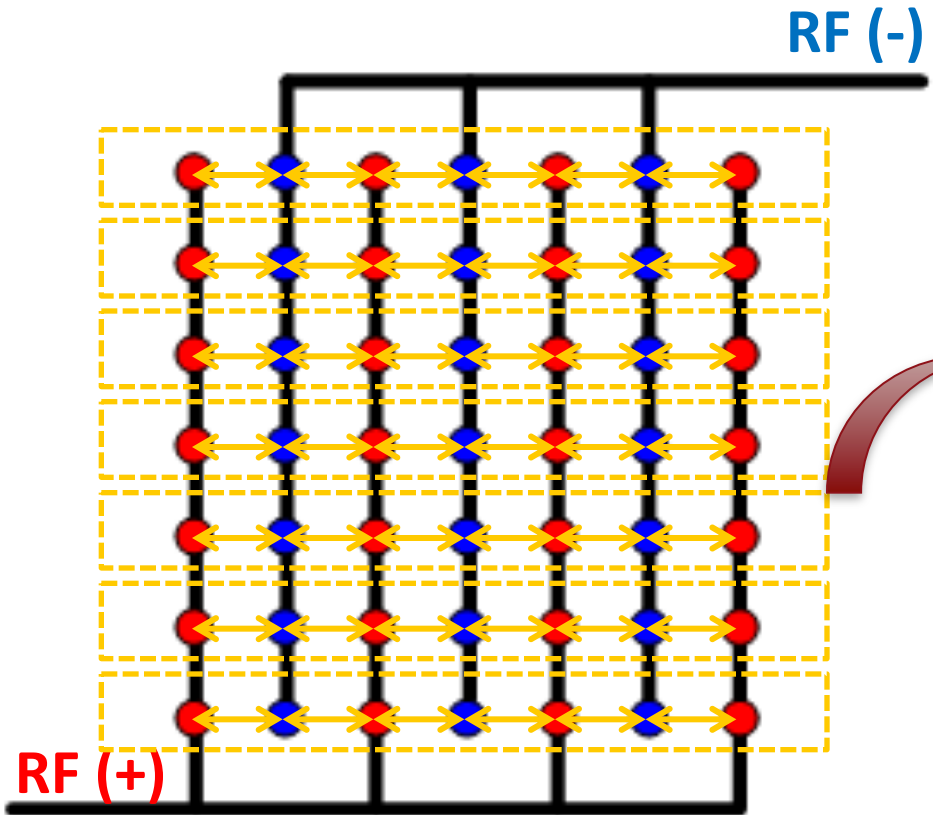
- Only the needle tip (300 μm) is the active electrode.
- Bipolar RF generates precise electrothermal damage at preset depths in the dermis
- Insulated needle body means no thermal damage at the critical dermal/epidermal layer



How do the Microneedles Work?

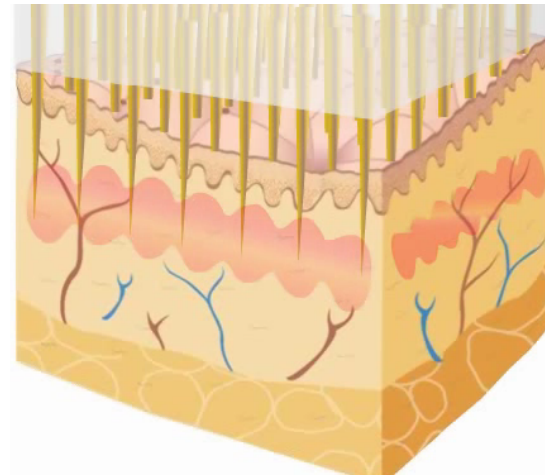
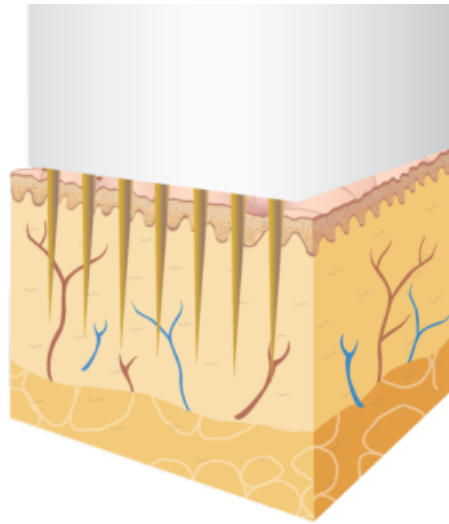
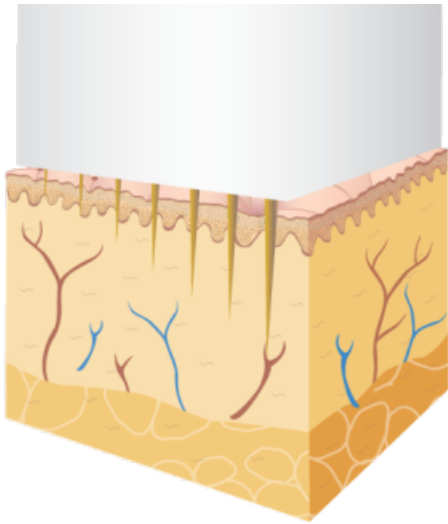


Diagram of RF (+) / (-) electrodes inside of 49 needle tip

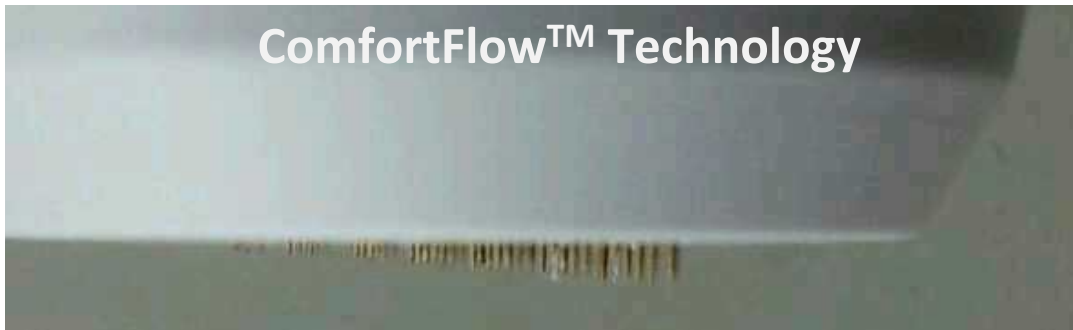


ComfortFlow™ Technology

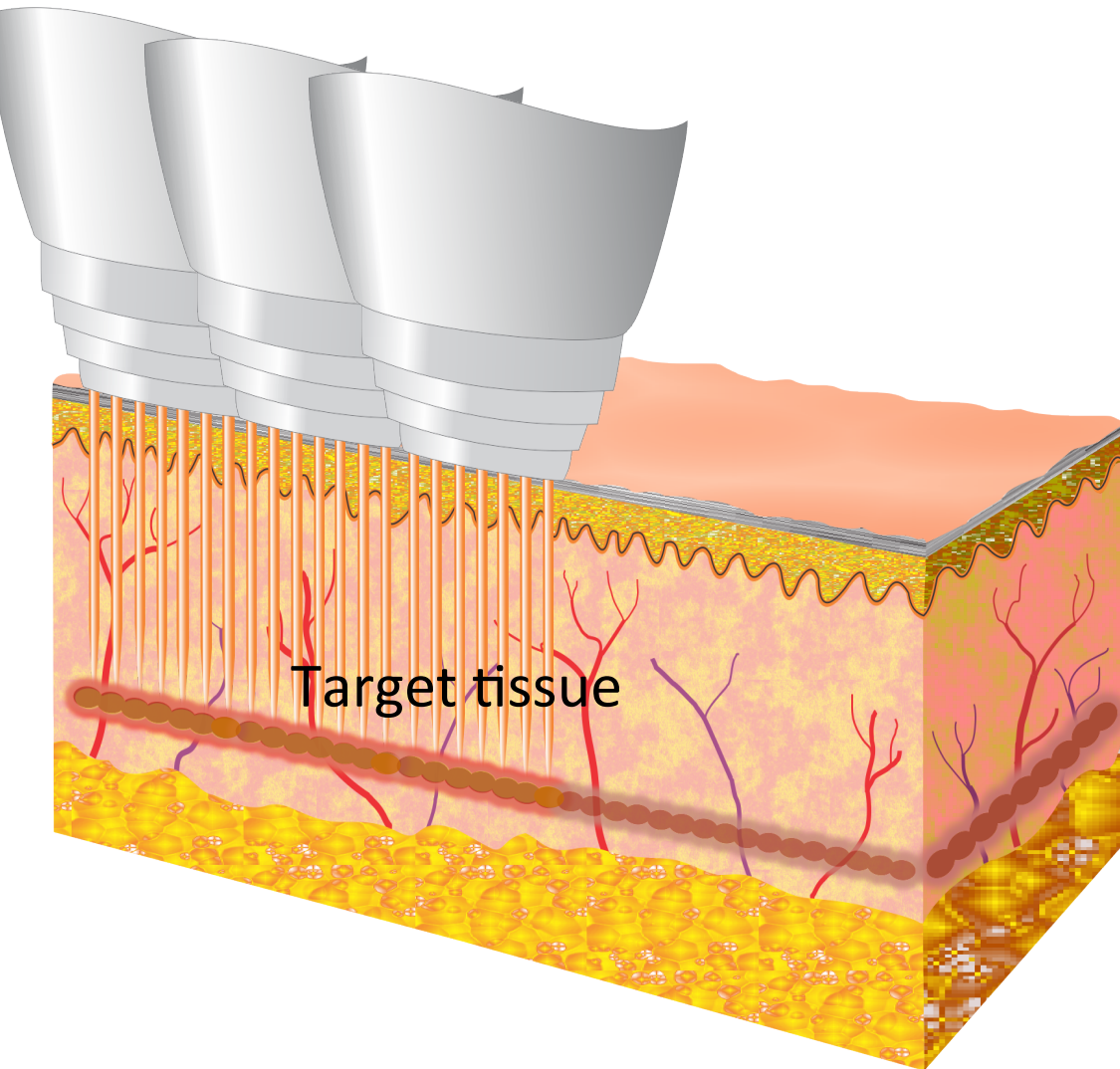
Enables smoother penetration via sequential needle insertion which minimizes patient discomfort for quick and easy recovery



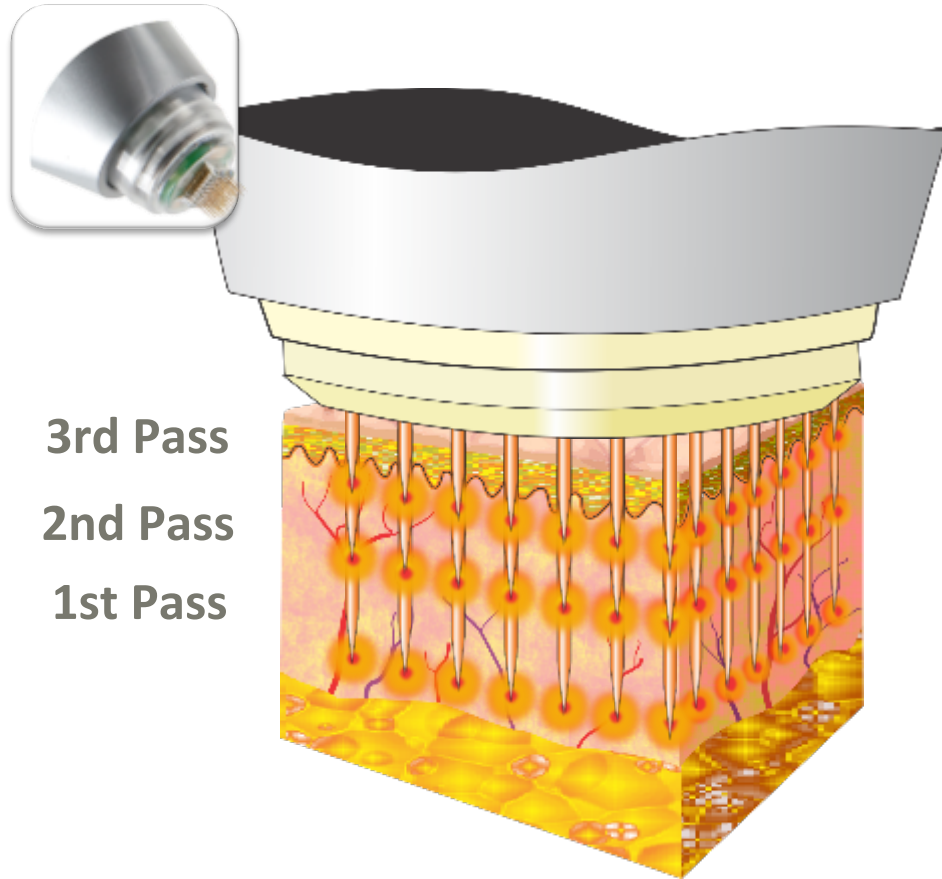
ComfortFlow™



Precise Coagulation Zones

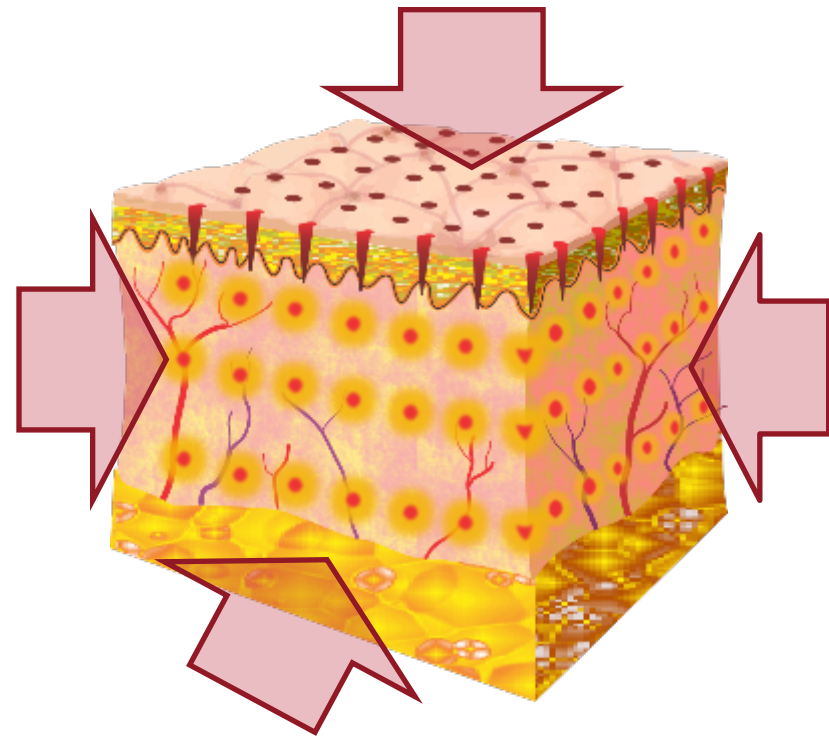


MFR Enables 3D Fractional Volumization



3rd Pass
2nd Pass
1st Pass

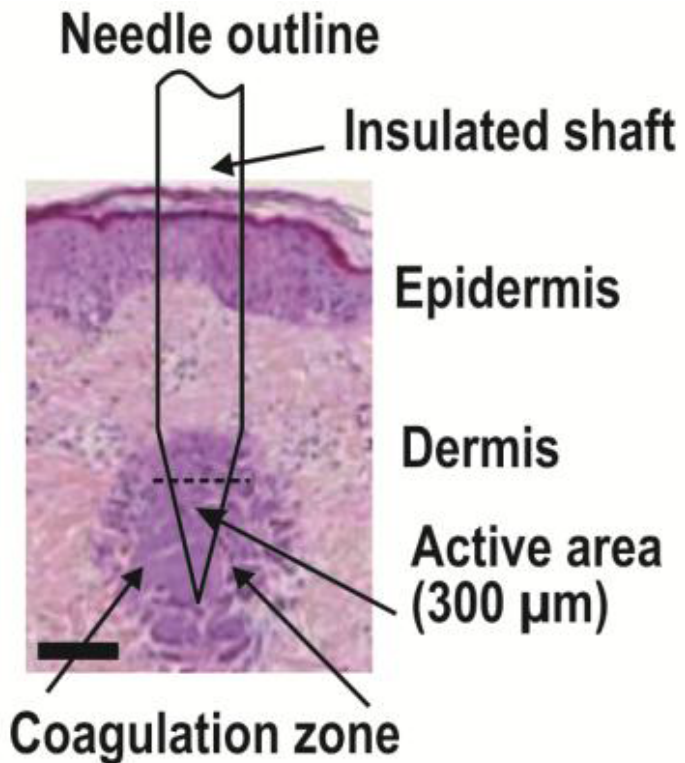
- Multilayer Approach
- Multiple Passes
- Selectable Depths



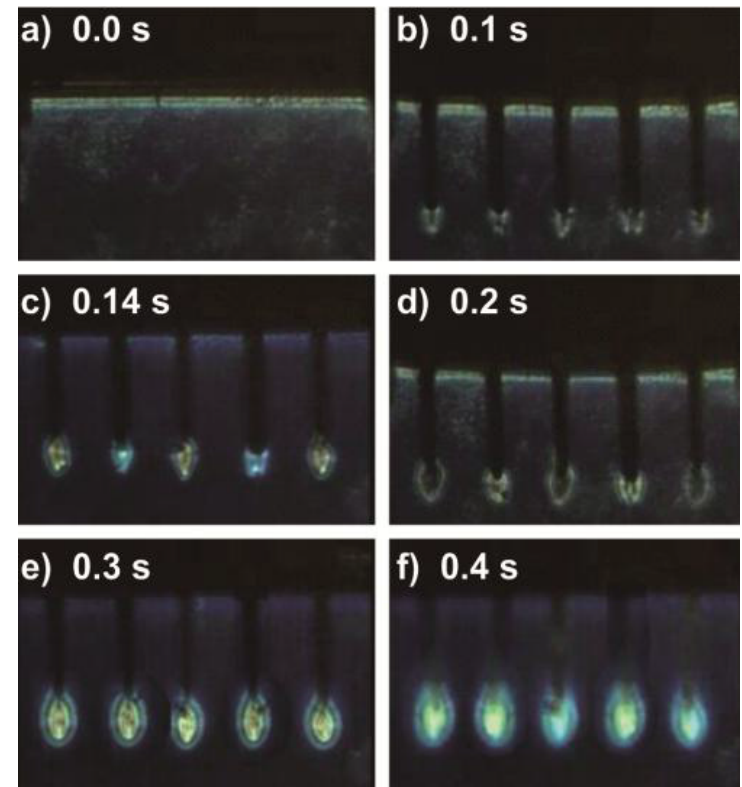
- 3D Fractional Tightening with volumization

Bipolar RF Microneedle Histology

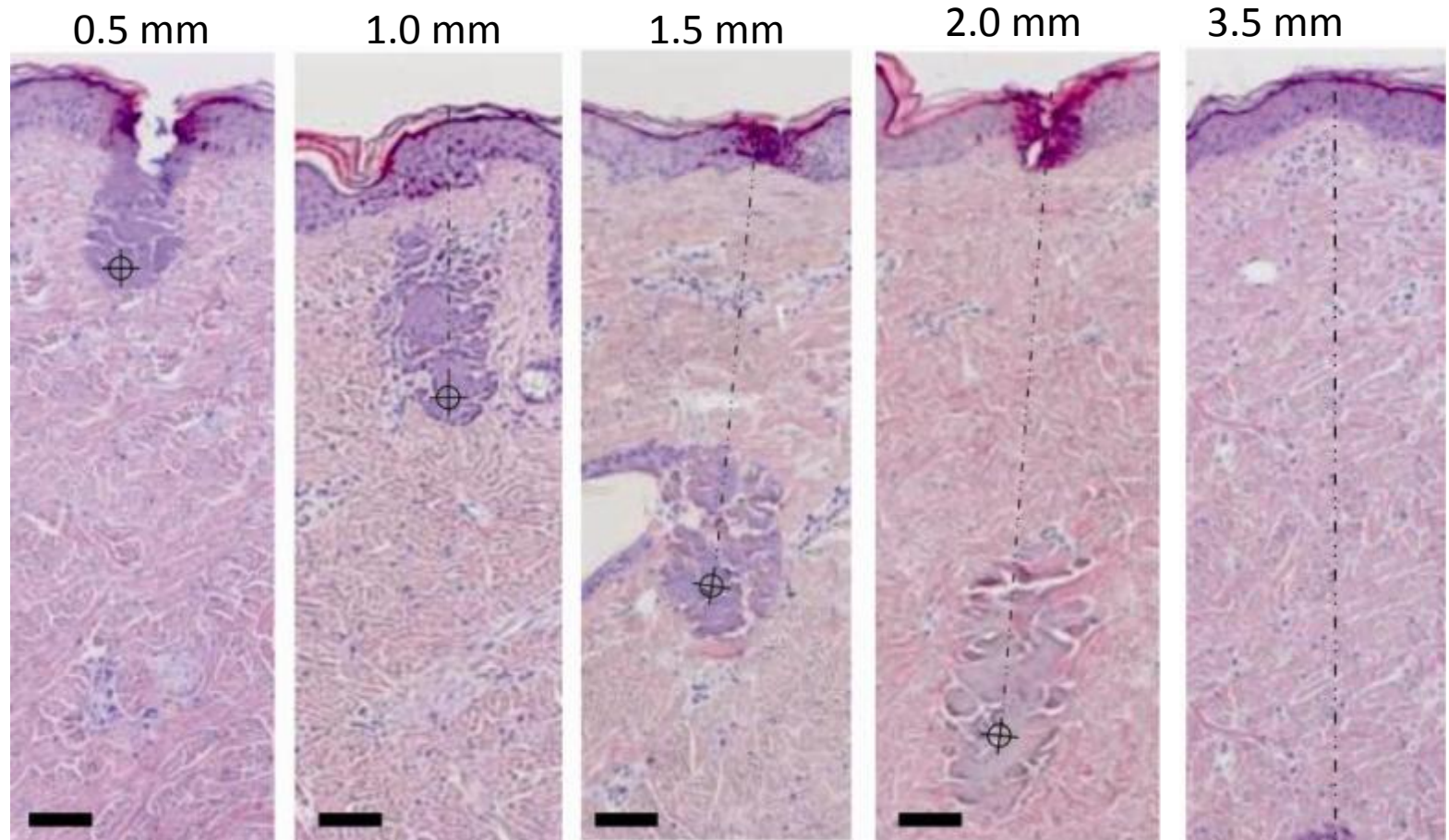
Microneedle RF damage zones



Thermal distribution of RF energy in skin phantom



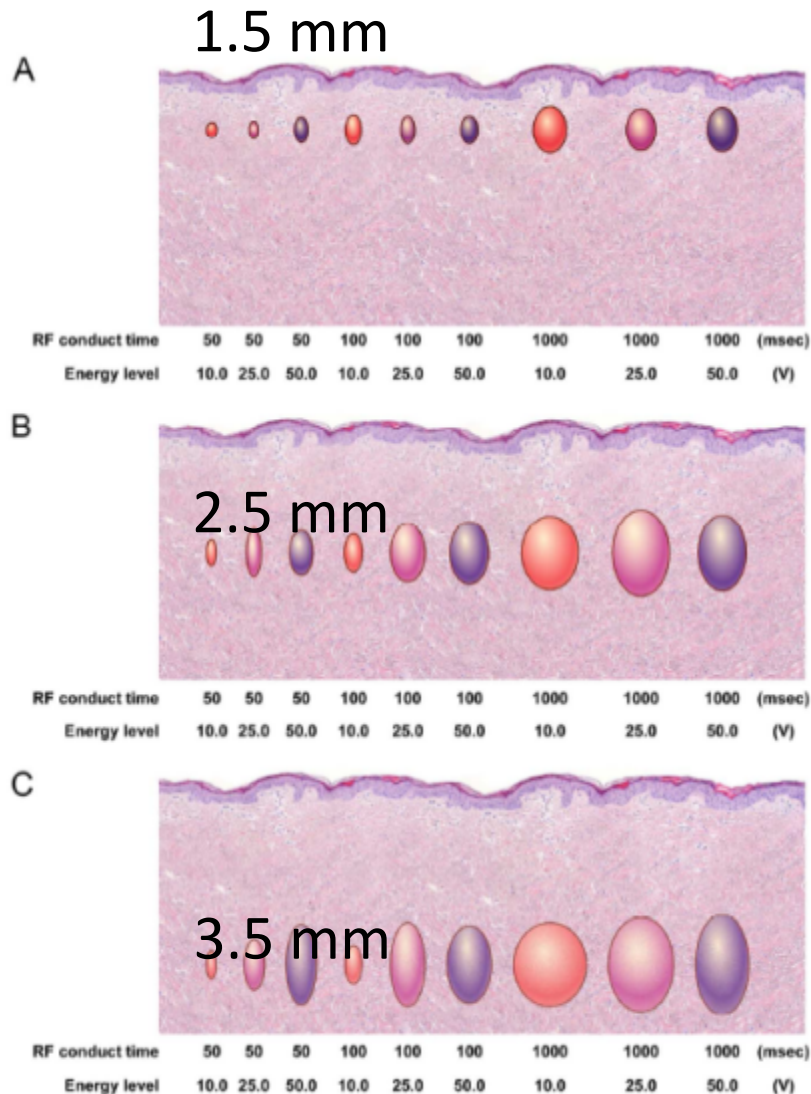
Over 3.5 mm Deep Treatment Zones



Needle depths of from 0.5 mm to 3.5 mm are illustrated at a constant power level of 4 and an exposure time of 100 ms.

Courtesy of BC Leo Goo, Dermatologist, S.Korea
Confidential Information

INFINI Histology



- Precise control of fractional zones of thermal coagulation confined to dermis and subcutaneous tissue
- Size of coagulation zone depends upon:
 - Energy level
 - Pulse duration
 - Needle insertion depth

From:
 Zheng Z, Goo B, Kim DY, Kang JS, Cho SB. Histometric analysis of skin-radiofrequency interaction using a fractionated microneedle delivery system. *Derm Surg* 2014; 40(2):134-141.

Clinical considerations

- Applications
 - Excellent for acne scarring
 - Superior skin quality, tone and texture improvement
 - Fine lines and wrinkles
 - Some improvement in pigment and laxity
 - Off face applications
- Treatment
 - Will need to manage pain with topicals and/or blocks
 - Very quick and easiest to use of RF devices
 - Full-face treatment in 25 minutes, neck in 10-15 minutes
 - Class II device, easy to delegate. No risk to eyes
- Patient
 - Minimal downtime, 36 hours or less of redness, swelling
 - No risk of fat atrophy
 - Some residual stamping, goes away with time or treatment
 - Benefits evident after 1 treatment

MFR Summary

- Extremely easy to use
- Treat all skin types with very precise control and delivery of RF energy
- Excellent alternative to fractional ablation
 - Provides similar outcomes in three treatments with minimal downtime or complications
 - Can be performed all times of the year on all skin types
- Potential for body applications such as stretchmarks, other applications under evaluation
- Fits well in all aesthetic practices
- Low cost of sterile disposable microneedle array
- Very high ROI, paid for machine in 2 months

Infini Treatment Downtime

PreTx – post topical



PostTx – immediate



PostTx – 15minutes



PostTx – 3.5hours



PostTx – 15 hours



PostTx – 24 hours

- **Dr Steve Weiner Treatment Settings**
 - 3.0mm depth level 4 140 ms lower face
 - 2.25mm, L4, 140 ms full face
 - 1.5mm L3, 130 ms fine lines
 - 1.0mm L6, 60 ms periorcular/perioral lines
 - 0.5mm L4, 40 ms lines are retreated
- **1300 pulses full face and neck**
 - 30 min full-face
 - Additional 15 min neck

- **Patients offered 3 treatment package**

proprietary Information

Courtesy of Steve Weiner MD